

Legacy Salmon Creek completes first year

Legacy Salmon Creek Hospital is celebrating its first birthday this week, and so is **Breanna Leigh Bullion**, who, on Aug. 22, 2005, was the hospital's first patient.

Breanna was born eight weeks premature last August in Legacy Emanuel Hospital in Portland and transferred to Legacy's Salmon Creek Neonatal Intensive Care Unit the day it opened because her mother, **Laurel Rae-Bullion**, works nearby at Washington State University Vancouver.

"Everything went smoothly," says Breanna's mother.

In the past 12 months, the state's newest hospital has treated 7,000 patients in private rooms, and 27,000 patients—an average of 74 a day—in the emergency department. The Salmon Creek hospital has helped deliver 1,125 babies. Both emergency department patients and new births are increasing, according to hospital administrator **Jonathan Avery**. He says a record of 159 births occurred in the hospital in July.

Most of the patients at the new hospital come from the Salmon Creek-west side of Clark County area. A little more than 95 percent of the hospital's patients are from Clark County, Avery reports. He says that more were expected to come from Cowlitz County, but so far that hasn't happened.

The hospital's medical staff includes more than 500 physicians, including 150 who have opened offices on or near the hospital campus at 2211 NE 139th Street.

According to Avery, the hospital employs 600 full-time persons and has an annual payroll of \$50 million.

Avery says the hospital provides a number of specialized services not previously available in Clark County, including an emergency pediatric department, Neonatal Intensive Care Unit, Elekta Synergy, an image guided radiation therapy at its Radiation Oncology Department, and a center for maternal fetal medicine.

Fort Vancouver attracting hundreds of thousands of visitors generating over \$37 million a year

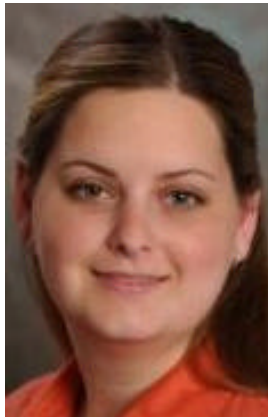
During the fiscal year 2005, the Fort Vancouver National Historic Site, which includes the McLoughlin House in Oregon City, attracted 786,800 visitors, reports the historic site's superintendent, **Tracy Fortmann**. That is an average of over 2,100 persons a day.

Fortmann says that the National Park Service has calculated that the economic benefit to the local community was \$37,226,200. She says that the local national park is responsible for supporting 834 jobs in the community.

Moody and Huff join Bank of Clark County



Ken Moody



Amy Huff

Ken Moody and **Amy Huff** have been hired by the Bank of Clark County to provide information systems management and customer service, respectively.

Moody has been appointed a vice president and information systems manager. He will oversee all technical aspects of the bank's network systems and data security. Moody has 18 years' experience in the financial services industry and is a Clark College graduate. He also holds a MSCE certification from Microsoft.

People

State Rep. **Deb Wallace** (D-17th) has been awarded the 2006 Champion Award by the Community Transportation Association of the Northwest for "her dedication to building better communities through strengthening our state's commitment to accessible transportation." Wallace is the vice chair of the House Transportation Committee.

Calendar

A fundraising event for 49th District Democratic state Rep. **Jim Moeller**'s re-election bid is from 5:30 to 7:30 p.m. today at the home of **John Rowe** and **Jim Christen**, 1319 NW 52nd Street. For further information, call **737-8754**. ☞ League of Women Voters interviews political candidates at 6:30 p.m. this evening in Gaiser Hall at Clark College. ☞ Clark County commissioners meet in an informal session in conference room B of the

Public Service Center at 1:30 p.m. Wednesday, Aug. 23. ☞ The third annual Port of Ridgefield commissioner's picnic in lieu of a regular meeting is 4 to 7 p.m. Wednesday at the Lake River Boat Launch picnic area in Ridgefield. The public is invited.

Tuesday headlines

[Washington State University Vancouver opens with 175 freshmen among its 2,000 fall student body--Columbian, **Margaret Ellis**](#)
[Modernized I-5 bridges could gouge out chunks of new and old downtown Vancouver--Columbian, **Jeffrey Mize**](#)
[Cantwell gets credit for Port of Vancouver assistance--Columbian, **Kathie Durbin**](#)
[Cantwell touts wind's effect on economy--Oregonian, **Holley Gilbert**](#)
[County officials asking Patty Murray for federal help on Salmon Creek interchange--Oregonian, **Bill Stewart**](#)
[Increased construction costs skewing bids--Columbian, **Cami Joner**](#)
[Shakespeare coming to WSU Vancouver's amphitheater--Columbian, **Brett Oppegaard**](#)
[Marines authorized to recall Marines to active duty for Iraq and Afghanistan because of shortage of volunteers--USA TODAY, AP](#)
[Iran reportedly rejects demands to halt nuclear efforts--Washington Post, **Fred Barbash and Dafna Linzer**](#)

Tuesday on the air

Columbia Crossing Task Force Meeting (8/16)—3 p.m. CVTV
City Minutes (7/23)—5 p.m. CVTV
Vancouver East Precinct Dedication (7/22)—6 p.m. CVTV
New York Yankees at Seattle Mariners (live)—7 p.m. FSN, KFX
Vancouver Symphony Under The Stars (8/17)—9 p.m. CVTV
Clark County Focus (8/13)—11:30 p.m. CVTV

Town Tabloids and the Weather

Don Jones retelling history. ☞ **Pat McGary** making history. ☞ **Timi Joe Thacker** handling details. ☞ **Richard High** solving high-tech mystery. ☞ **Tom Kovarick** moving on from roofing to computing. ☞ **Maggie Huffman** watching over good show. ☞ **Tuesday**, muggy, cloudy, 74. **Wednesday**, partly cloudy, 72. **Thursday**, cloudy, 76.